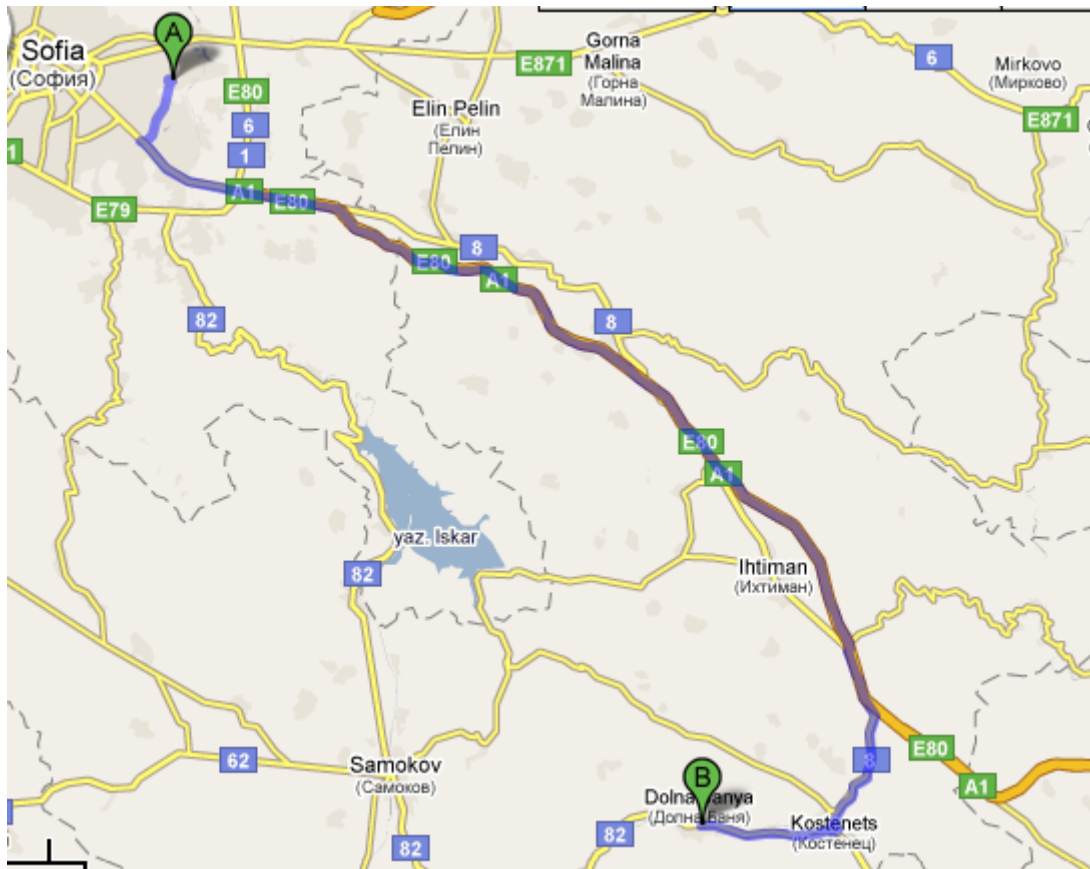


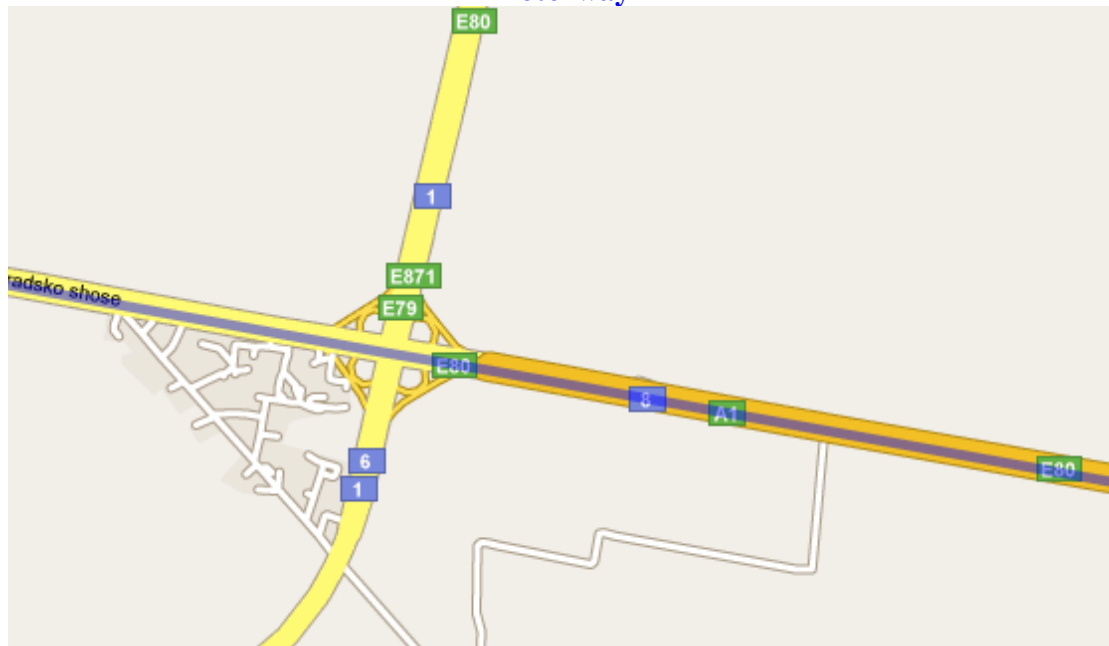
Directions from Sofia Airport to Dolna Banya



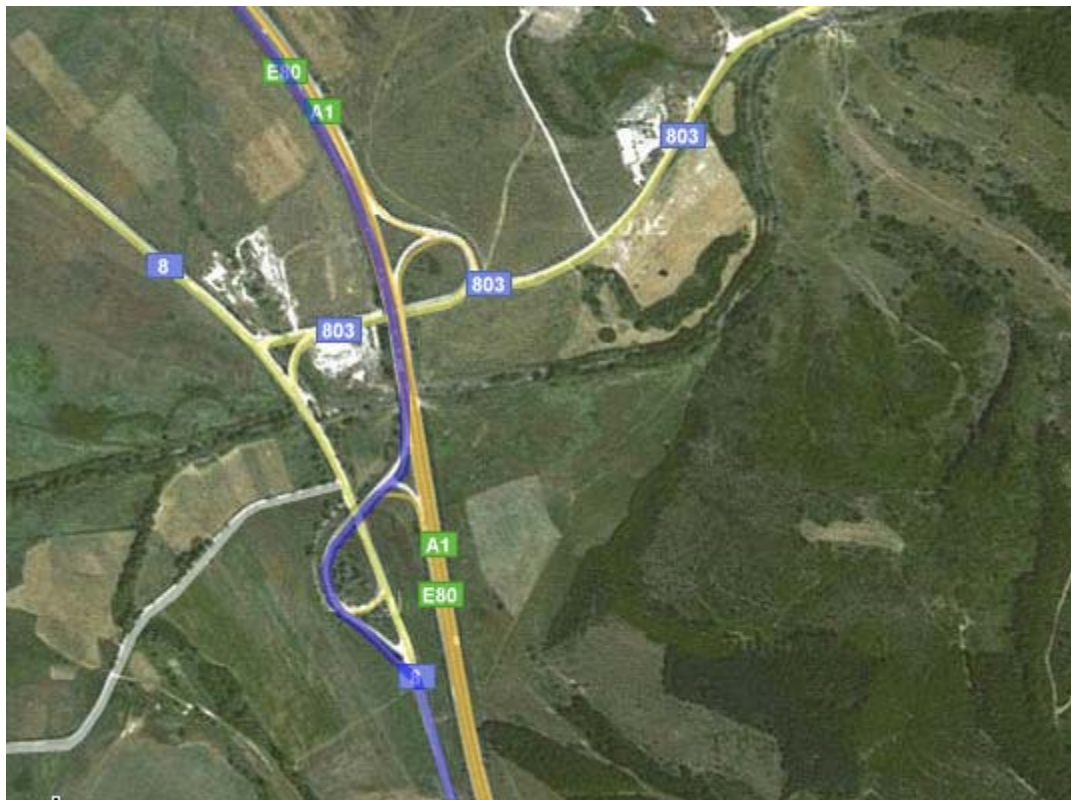
First significant turning from airport. This then gets you on the main road to the motorway – sign posted **PLOVDIV**



POLICE - Watch out for the **SPEED** limit of 50kph as you approach the motorway



Continue on motorway for approx 46km, pass the Ihtiman turning (you will see an airplane just off the verge) – **do not turn off here**, but take the next turning.



This road runs parallel with the motorway for a while. Stay on this road passing through a few villages until you reach Kostenets.

When you reach Kostenets, proceed past the Petrol Station and over the railway bridge. Then take a sharp left back into Kostenets village, follow the road round going under the bridge, bear round to right and continue on this road which leads to Dolna Banya.

KEEP TO THE SPEED LIMIT IN KOSTENETS AS THE POLICE ARE ALWAYS ON THE LOOK OUT



Just before you approach Dolna Banya you will see a private airfield on the right and Golf Club Ibar is sign posted off to the left.

